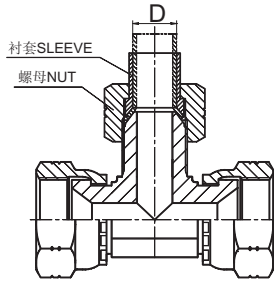
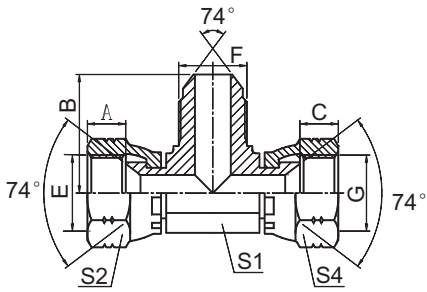


过渡接头 ADAPTER



EJ

美制 JIC 内螺纹 / 美制 JIC 外螺纹 / 美制 JIC 内螺纹
JIC FEMALE/JIC MALE/JIC FEMALE

| 代号 PART NO. | 螺纹 THREAD | | | 尺寸 DIMENSIONS | | | | | |
|----------------|------------|------------|------------|---------------|--|------|------|----|-------|
| | E | F | G | | | A, C | B | S1 | S2,S4 |
| EJ-04 | 7/16"X20 | 7/16"X20 | 7/16"X20 | | | 9 | 24.5 | 11 | 15 |
| EJ-06 | 9/16"X18 | 9/16"X18 | 9/16"X18 | | | 10.5 | 26.9 | 14 | 19 |
| EJ-08 | 3/4"X16 | 3/4"X16 | 3/4"X16 | | | 11 | 32 | 19 | 24 |
| EJ-10 | 7/8"X14 | 7/8"X14 | 7/8"X14 | | | 13 | 37.8 | 22 | 27 |
| EJ-12 | 1.1/16"X12 | 1.1/16"X12 | 1.1/16"X12 | | | 15 | 44.2 | 24 | 32 |
| EJ-16 | 1.5/16"X12 | 1.5/16"X12 | 1.5/16"X12 | | | 16 | 49 | 33 | 41 |
| EJ-20 | 1.5/8"X12 | 1.5/8"X12 | 1.5/8"X12 | | | 17 | 56.5 | 41 | 50 |
| EJ-24 | 1.7/8"X12 | 1.7/8"X12 | 1.7/8"X12 | | | 20 | 63 | 48 | 55 |

注：螺母及衬套需另行订货。管子直径 D 为公制时，配用螺母及衬套分别选用 NB200、NB500。管子直径为英制时，配用螺母及衬套分别选用 NB200、NB300。 Nut and sleeve should be ordered separately. The nut NB200 and sleeve NB500 is suitable for metric tube, the nut NB200 and sleeve NB300 is suitable for inch tube.